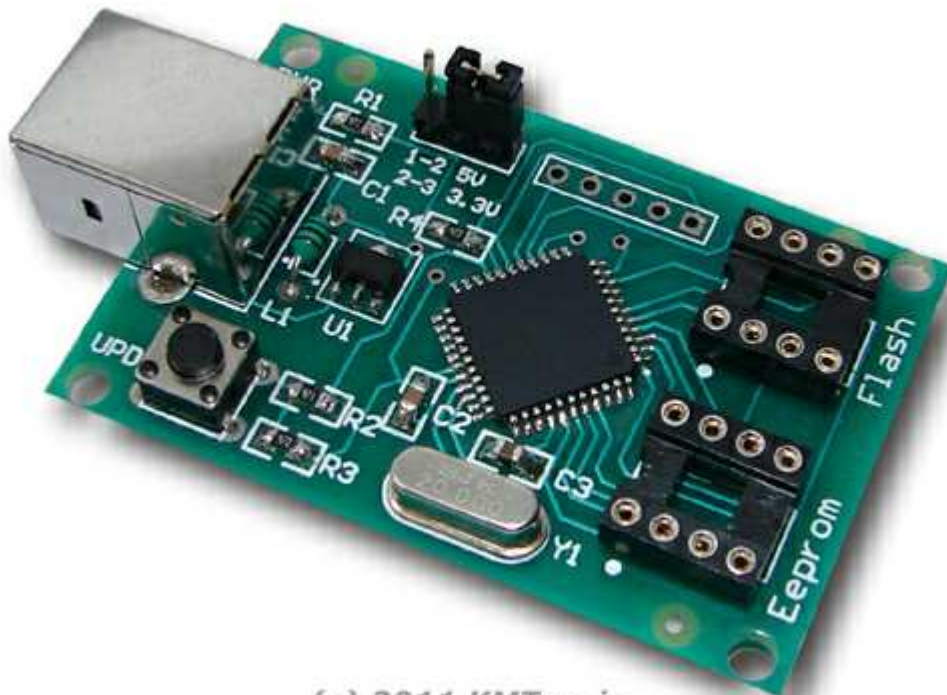


KEEPROG USB E-Eprom and Flash programmer

Fully assembled and tested



(c) 2011 KMTronic

Description :

It is an unpretentious USB programmer for the EEPROM and serial FLASH memories. The programmer is electrically supplied from the USB port.

Dimensions:

6 cm x 3.5 cm

Supply :

The programmer uses supply from the USB and does not need external.

Tested with memories producent :

Microchip, ATMEL, ST, Macronix, Spansion, Eon SSI.

Software :

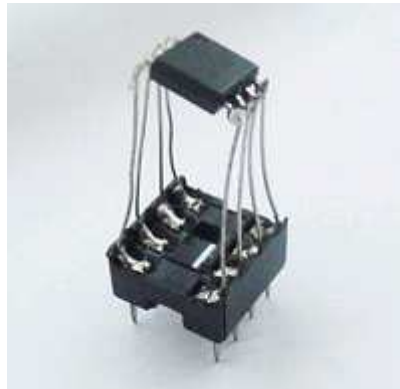
Free, included in complete. Works under Windows 98, 2000, XP, Vista.

Complete includes :

- USB programmer
- Software
- USB cable

SMD mounted EEPROM's :

This programmer can be easily adapted to work with SMD mounted EEPROM using one 8 PIN socket and several finely wires.

**Disclaimer :**

In no event the author will be liable to you for damages, including any general, special, incidental or consequential damages arising out of the use or inability to use the program (including but not limited to loss of data or data being rendered inaccurate or losses sustained by you or third parties or a failure of the program to operate with any other programs), even if such holder or other party has been advised of the possibility of such damages.

List of devices which programmer supports :

EEPROM's I2C

24C00, 24AA00, 24LC00, 24C01C, 24AA01,
24LC01B, 24AA014, 24LC014, 24C02C, 24AA02,
24LC02B, 24AA024, 24LC024, 24AA025, 24LC025,
24AA04, 24LC04B, 24AA08, 24LC08B, 24AA16,
24LC16B, 24LC21, 24LC21A, 24LCS21A, 24LC22A,
24LCS22A, 24LC32A, 24AA32A, 24AA52, 24LCS52,
24LC64, 24AA64, 24FC64, 24C65, 24LC65, 24AA65,
24AA128, 24LC128, 24FC128, 24LC256, 24AA256,
24FC256, 24AA512, 24LC512, 24FC512, 24AA515,
24LC515, 24FC515, 24xx1024, 24AA1025, 24LC1025,
24FC1025

EEPROM's SPI

25xx010, 25xx020, 25xx040, 25xx080,
25xx160, 25xx320, 25xx640, 25xx128, 25xx256,
25xx512, 25xx1024

EEPROM's SPI

93xx06 x8, 93xx06 x16, 93xx46 x8, 93xx46 x16,
93xx56 x8, 93xx56 x16, 93xx66 x8, 93xx66 x16,
93xx76 x8, 93xx76 x16, 93xx86 x8, 93xx86 x16

EEPROM's SPI

95010, 95020, 95040, 95080, 95160, 95320,
95640, 95128, 95256, 95512, 95M01

Macronix Serial Flash memories

MX25L512, MX25L5121E, MX25L512C, MX25L512E, MX25V512, MX25V512C,
MX25L1005C, MX25L1006E, MX25L1021E, MX25L1025C, MX25L2005,
MX25L2006E, MX25L2026C, MX25L2026E, MX25L4005A, MX25L4006E,
MX25L4026E, MX25U4035, MX25V4005, MX25V4005C, MX25V4006E,
MX25V4035, MX25L8006E, MX25L8035E, MX25L8036E, MX25U8035,
MX25U8035E, MX25V8005, MX25V8006E, MX25V8035, MX25L1606E,
MX25L1633E, MX25L1635E, MX25L1636D, MX25L1636E, MX25U1635E,
MX25L3206E, MX25L3225D, MX25L3235D, MX25L3236D, MX25L3237D,
MX25U3235E, MX25L6406E, MX25L6436E, MX25L6445E, MX25L6465E,
MX25U6435E, MX25L12835E, MX25L12836E, MX25L12845E, MX25L12865E

Spansion Serial Flash memories

S25FL004A, S25FL040A, S25FL004K, S25FL008K, S25FL008A, S25FL016A,
S25FL016K, S19FL032P, S25FL032A, S25FL032P, S25FL032K, S19FL064P,
S25FL064A, S25FL064P, S25FL064K, S19FL128P, S25FL128P, S25FL129P,
S25FL128K

Eon SSI Serial Flash memories

EN25F05, EN25F10, EN25LF10, EN25S10, EN25F20, EN25LF20, EN25S20,
EN25F40, EN25Q40, EN25LF40, EN25S40,
EN25F80, EN25Q80A, EN25S80, EN25F16, EN25Q16, EN25QH16, EN25F32,
EN25Q32A, EN25Q32B, EN25B64, EN25P64,
EN25Q64, EN25Q128

Drivers and software instalation :

You have to download the drivers and software from here:

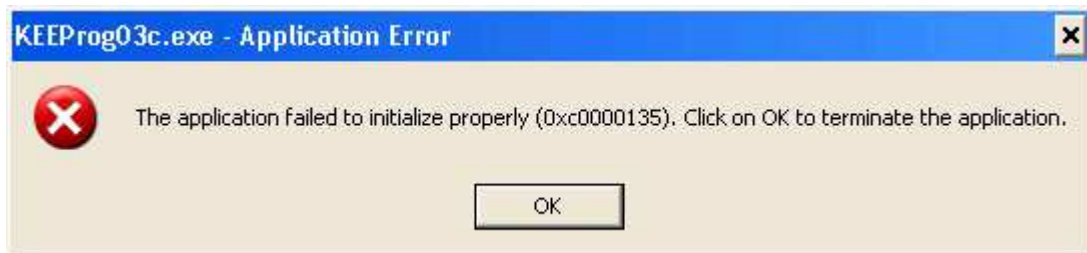
http://www.sigma-shop.com/software/keeprog/KEEPProg_USB_3.10.zip

Also you can check for new versions here:

<http://www.sigma-shop.com/software/keeprog/>

When you connect the programmer, the following message appears:
FOUND NEW HARDWARE and drives need to be installed.

If you get this message you see the following error :



that means that you do not have the latest version of Microsoft .NET Framework installed on your computer.

The program has to be installed on your computer in order to use the programmer.

You can download this from :

<http://www.microsoft.com/downloads/en/details.aspx?FamilyID=9cfb2d51-5ff4-4491-b0e5-b386f32c0992&displaylang=en>

If everything is ok this message should appear:

